

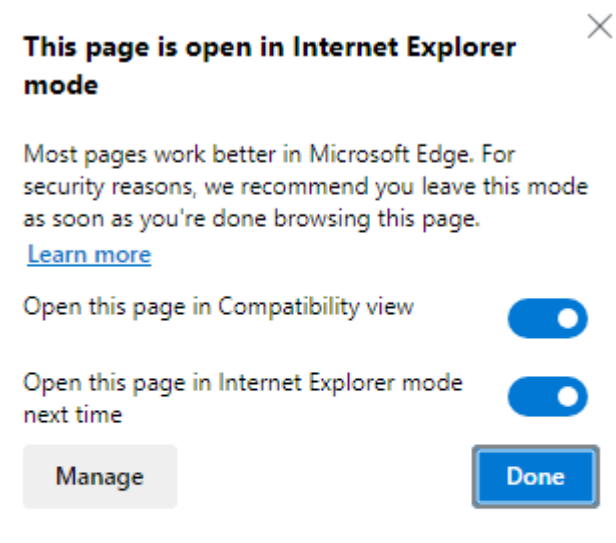
Please note the Form FMC-18 portal is only compatible with Microsoft Edge. Due to Microsoft's design, these settings are only retained in the system for 30 days at a time. Please follow the instructions below.

Method 1:


1. Open Microsoft Edge
2. Go to the FMC-18 application portal and log in with your credentials
3. At the top right-hand corner of the browser, please locate the "Blue E"




4. After you click the "Blue E", you will have a pop up on the left side of the browser window. Move the slider buttons on both options to the right. If done correctly, it will look like the screen shot below.



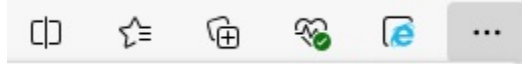
5. Click on done and once closed, log back onto the Form FMC-18 application portal and it should be viewed correctly.

 Compatibility Mode: IE5

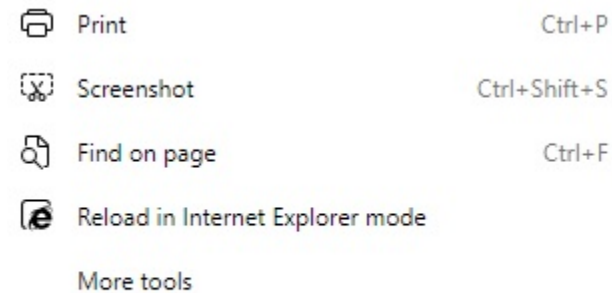
 Protected Mode: Off

Method 2:

1. Open Microsoft Edge
2. Click on the three dots (...) at the top right hand corner of the Microsoft Edge browser



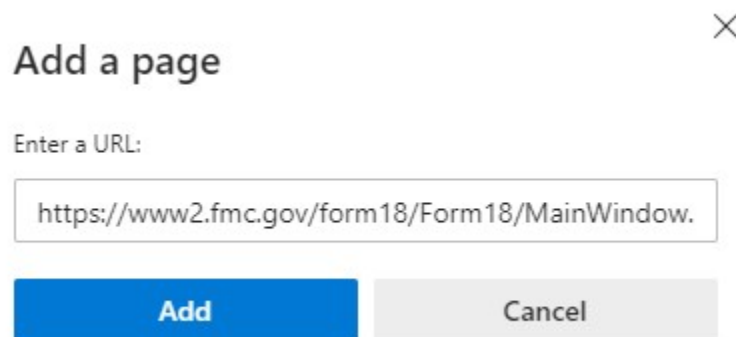
3. $\frac{3}{4}$ the way down on the drop-down menu, click on “Settings”



4. When the Settings page opens up, click on “Default Browser” from the menu on the left side of the screen



5. When the new tab opens to Default Browser settings, verify that “Allow sites to be loaded in Internet Explorer mode (IE Mode)” is set to “Allow”
6. Click on the “Add” button and paste the following URL into the Add a page pop up and click Add: <https://www2.fmc.gov/form18/Form18/MainWindow.aspx>



7. Your browser settings should look like the following. In the following screen shot, you will see that the page compatibility has an expiration date of 30 days:



Internet Explorer compatibility


Allow sites to be reloaded in Internet Explorer mode (IE mode) ? Allow ▾

When browsing in Microsoft Edge, if a site requires Internet Explorer for compatibility, you can choose to reload it in Internet Explorer mode

Internet Explorer mode pages Add

These pages will open in Internet Explorer mode for 30 days from the date you add the page. You have 1 page that'll automatically open in Internet Explorer mode.

Page	Date added	Expires	
 https://www2.fmc.gov/form18/Form18/MainWindow.aspx	7/2/2024	8/1/2024	

Internet Options 

8. You may close the Default Browser tab and log back onto the Form FMC-18 application portal and it should be viewed correctly.